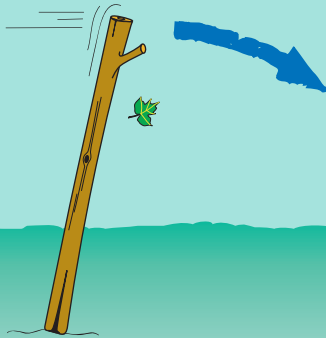
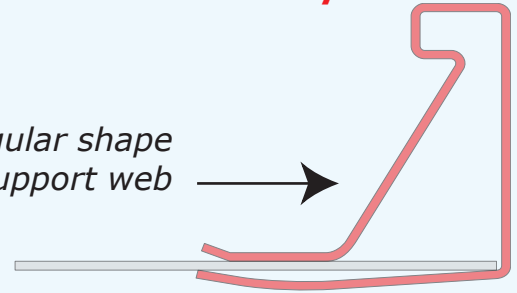


WHY ARE METU PROFILES SO SPECIAL?

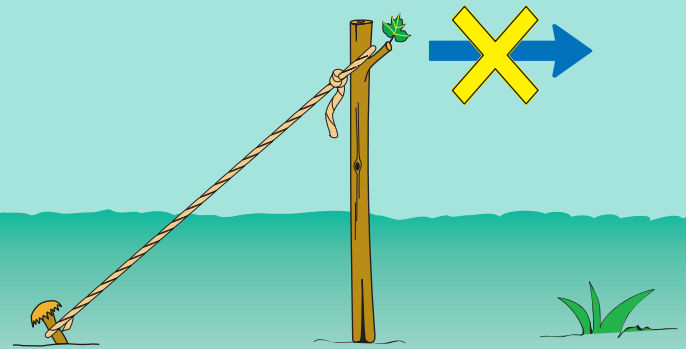
After more than 50 years the Metu profiles are still considered to be the strongest, offering optimal qualities for rectangular ductwork assembly.

Here is why . . .

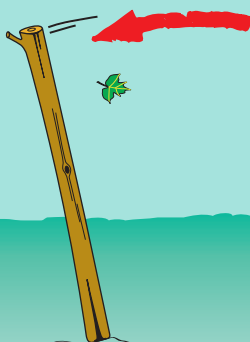
The reason lies in the triangular shape and especially the angled support web



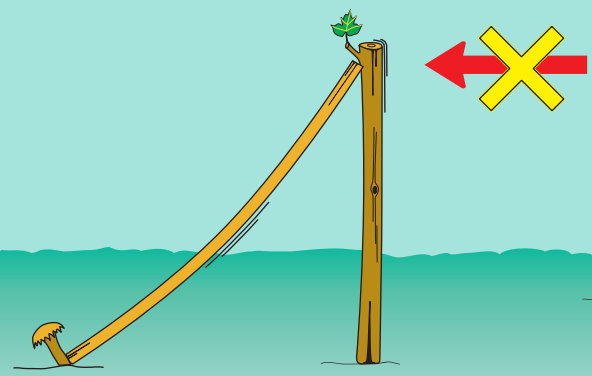
In the corners areas the profile is subject to important and constant pulling forces. A weaker profile bends easily, compromising the stability and air-tightness of the whole ductwork system.



The angled support web of the Metu profiles, here depicted by a rope, prevents the profile from being deformed, providing excellent integrity to the HVAC ductwork system.



In the area between the corners the gasket deforms the profiles, creating a gap which usually requires additional clamps.



The same angled support web of the Metu profiles, here depicted by a board on the a.m. drawing, prevents the profile from being bent and eliminates the extra clamping time and costs!

Don't take any chances, use **METU[®] SYSTEM**