

The METU-FORM Duct System - A new solution with many Advantages

Highest quality HVAC products that provide peace of mind for the installer and the manufacturer. These are the claims of METU-FORM, a round duct system setting new standards for air and liquid tightness, ease of assembly, and sustainability. Meticulously engineered and produced to exacting standards, the METU-FORM system is an efficient way to save energy and comply with existing construction standards VDI 6022 and DIN EN 12237. METU-FORM provides a practical yet economical answer to the myriad problems that planners, technicians, and HVAC operators face today.

Feedback from numerous satisfied customers confirm the above:

"I was impressed by how much technology and manufacturing know-how METU put into its machinery and products, especially the new METU-FORM pipe system. The end products are far better than anything I have seen so far and solve many problems related to the ventilation technology automatically."

Guido Hartmann, HARTMANN Umwelttechnik GmbH

"Super handling. You can even mount these products with one hand. With most other systems you need your two hands, and at times it would be good if the installers had three hands. I also think it is an advantage that METU is a small, flexible company that supports its customers with useful technical advice and short delivery times. Urgently needed parts could be picked up on short notice."

Dipl. Ing. Ingo Wagner, EMIFREE GmbH / Produktion von Filteranlagen



Process industry: removing air charged with oil mist

"The ability to guarantee oil tightness, even for large duct diameters (1000 mm), was the main requirement for a very large project of an automotive supplier. We liked the fact that METU was able to produce special duct lengths, as we did not want to use telescopic fittings. Several complicated fittings were also manufactured per the customer's request. We were very satisfied with the way this unusually large project was conducted. The parts were well packed and delivered on time with the METU truck. With the help of the METU-SRX clamp ring connection system, the assembly of the individual segments several meters above the ground was carried out very efficiently."

Torsten Munkelt und Oliver Keller, ENGIE Deutschland GmbH (früher COFELY)

Regarding the Air Duct Shape

It is basically recommended, assuming there is enough space, to use round air ducts. They have better airflow characteristics, are less susceptible to vibration, and can generally be manufactured more economically. In addition, more effective connection systems simplify their assembly. There are naturally situations where the use of a rectangular air duct is indispensable.

Tightness

Tightness is one of the most important aspects when it comes to energy efficiency. Using ordinary air ducts to achieve air-tightness class D in accordance with DIN EN 12237 usually proves to be a challenge, especially if rectangular air ducts are used.

The benefits of a tighter ventilation system are however considerable. Fan speed can be reduced, for example, resulting in long-term energy-costs savings.

The METU-FORM products exceed the highest air-tightness class D requirements without the need for additional sealing measures. Thus, in many cases, the allowable leakage falls well below the requirement and provides additional added value.

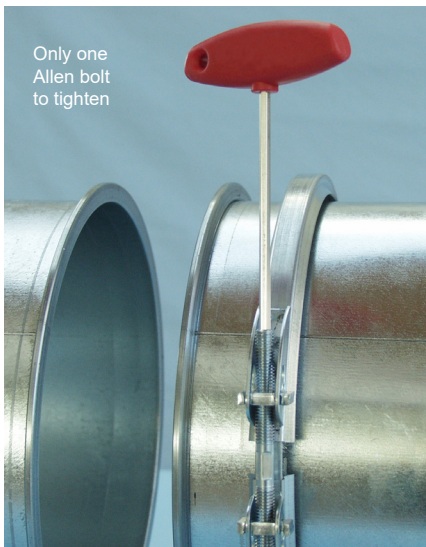
Duct in which air charged with oil mist, aerosols or liquids is transported, must either be carefully tightened using costly additional measures (usually their effect is limited in time), or thick-walled, heavy, and more difficult to assemble ducts are used. As the METU-FORM pipe system is liquid and oil-tight, it is ideal for such applications.



Smooth Inner Surfaces

Spiral-seamed and longitudinally welded round ducts already offer relatively smooth inner surfaces, which are surpassed only by welded tubes. Smooth surfaces are dirt-retardant, easier to clean when necessary, and minimize friction. The METU-FORM Laser and MIG welded connections create no protrusions inside the ducts (contrary to screws and connections which enter into one another), and offer the best conditions for higher hygiene and air-flow optimization.

Assembly Ease



What good is it if valuable assembly time on the construction site is wasted because of „cheap“ air ducts? If one considers the end results, the „cheap solution“ at equivalent costs, is a qualitatively worse air duct generating in the long term higher operating and maintenance costs. The assembly often takes place under difficult conditions (i.e. several feet above the ground or in cramped spaces).

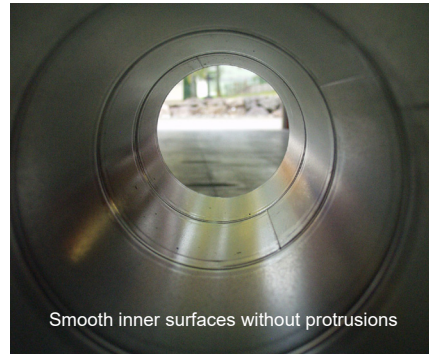
Many bolts, screws or nuts have to be tightened. METU has developed connections which can be installed very efficiently by tightening only one hexagon socket screw for all diameters from 80 to 1000 mm. We reduce assembly time without compromising quality.

The time savings are for many customers the main argument for choosing METU-FORM.



Videos showing the installation of SRX joining clips and MUX Overcollars are available online at www.metu.de

Appearance:



The METU FORM ducts have a clean and attractive appearance. Painting is not required except when specified or preferred.

Service

A new 6,600 square meters building dedicated to the production and storage of METU-FORM products, together with the flexibility of a medium-sized company, enable short delivery times.

The exchange of product knowledge and project analyses with planners and installers constitute our daily tasks.

Challenges are welcome, as they lead to improvements and progress.

Trend-setting Developments in Ventilation

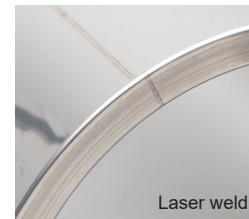
Already in recent history, several METU innovations have become industry standards. Examples include the 4-bolt connection system for rectangular ducts,

oval access doors for the inspection and cleaning of ducts, as well as single bolt connectors such as circular flanges and overcollars. Because of its energy saving properties and unsurpassed quality, METU-FORM is also destined to become the industry standard by which all other air ducts will be measured.

METU-FORM Application Fields

HVAC ventilation systems of all kinds (shorter installation times and energy efficiency due to increased tightness and low-friction inner surfaces).

- Extraction with oil mist or welding fumes, process air.
- Dedusting (dusts, chips, etc).
- Kitchen exhaust / cleaning of air ducts in commercial kitchens by use of liquid detergents.
- Increased hygiene requirements (prevention of deposits).
- Hospitals, Laboratories (to prevent contamination)



For further information please call +49 (0) 7461 9287-0 or visit us on the internet at www.metu.de

S. Theodossiou
METU Meinig AG

